

DJPower SCHEDULER Overview

An Introduction:

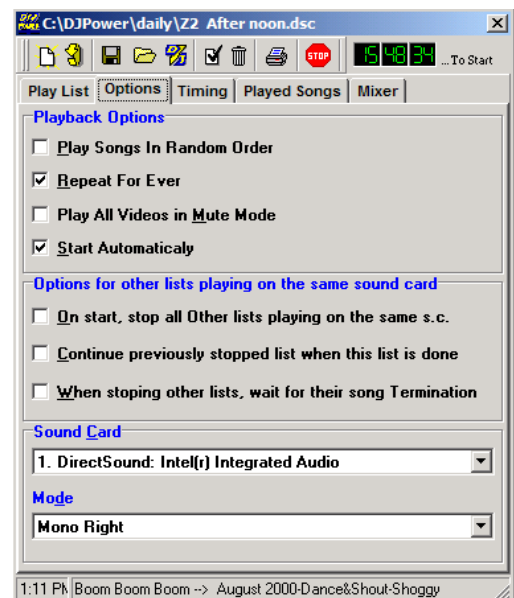
In this overview, we will make full use of the List/Scheduler feature and go over how to program and operate **multi-zone use**, as well as **multi-timing** in each zone. This powerful tool allows the playback on multiple channels of audio and video from a single computer. I also allows for **the startup with specific timings** and can **stop automatically at a desired time**. A significant advantage of this tool is that it can play certain kinds of the music in certain **time intervals** during the day and then hand over to another set of music programming to play in each individual zone. In addition it can play specific messages, tunes, or videos in a 24 hour period. The program can be scheduled to repeat hourly, daily, weekly and even monthly. You could also skip a specific day of the week and replace it with a different kind of program. It gives the ability to play videos in mute mode, coupled with different audio if desired. The number of playback channels is only limited to the number of the sound cards in your system. If you have a sound card with 2 stereo channels, you could play 4 mono streams of individual audio. The maximum available channels in a pro-sound cards is 16 mono (8 stereo).



SCHEDULER OPTIONS

This tab will set how the Play List should function. Example:

Play Songs In Random Order: Will play the list in random order, including folders and individual songs.



SCHEDULER TIMING

Example with illustration: We will now make a List to start at 8:10 AM and stop at 3 PM and play almost every day of the week at the same time. And we want to have the list start two days from now.

1) Check “Start Exactly At” and set the time box to “08:10:00”.

2) Check “Stop Exactly At.” and set the time box to “18:00:00”. (see time chart on previous page)

3) Under “Recurrence”, check the “Repeat Every” box and change the Day to “1”. This will repeat the list every day. (If the Day box is set to “2”, this will force to list repeat every other day.)

4) We do to NOT want to play on Tuesdays and Fridays, so un-check these days.

5) We want to start this routine two days from now, so check on “Start Date” and set the calendar box to two days from now. (this example is November 8, 2003)

To schedule a different style of music for Tuesday and Friday, another List needs to be made with the “Recurrence” box checked on only Tuesday and/or Friday.

