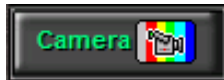


## DJPower LIVE CAMERA Overview

Whether you need to utilize one camera, or multiple cameras, DJPower's Live Camera software add-on is an essential element in clubs and DJ gigs. This feature will make it possible to play one or more video cameras on separate display screens. Also the VJ has the ability to preview individual cameras prior to broadcasting to the audience. Special effects, such as animation of the real time camera is a very attractive feature presented by this software add-on, as well as using a psycho effect animation and rotating the camera colors

### USING THE CAMERA WITHIN DJPOWER



To open the Camera control panel, click on the Live Camera Display icon located at the bottom of the main DJPower screen.



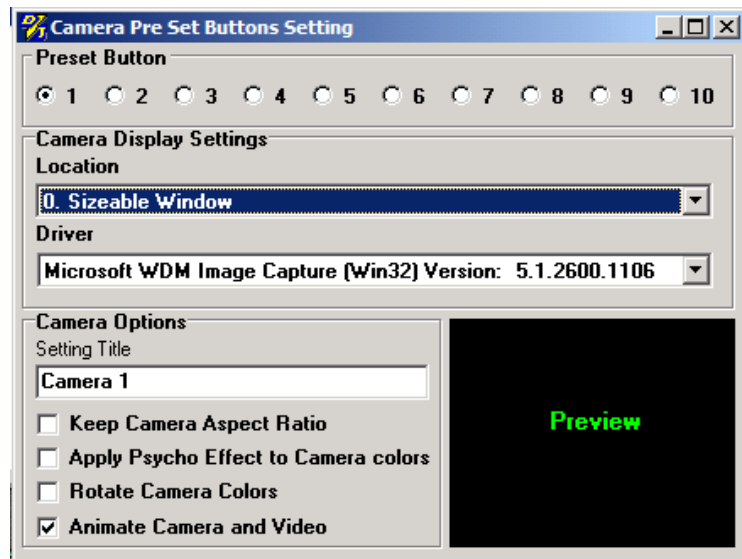
The Camera Preset panel consists of 10 buttons representing 10 camera channels, a camera number indicator, as well as the Setting button and Close button.

### PRESET BUTTON

These buttons allow you to assign up to ten specific settings for each camera such as output location, camera color, Psycho Effect and other setting. For each button, a separate setting will be saved for the same camera.

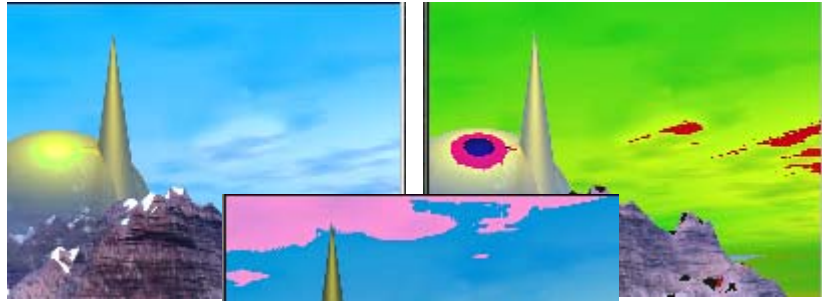


**NOTE:** The Live Camera feature can also be used in the DJPower Video FX software add-on allowing for more dynamics, including ghosting over the current video playback.



### **Apply Psycho Effect to Camera colors**

In this mode, the output of the camera's colors will change. It will be somewhat like a negative, but with more brighter colors.



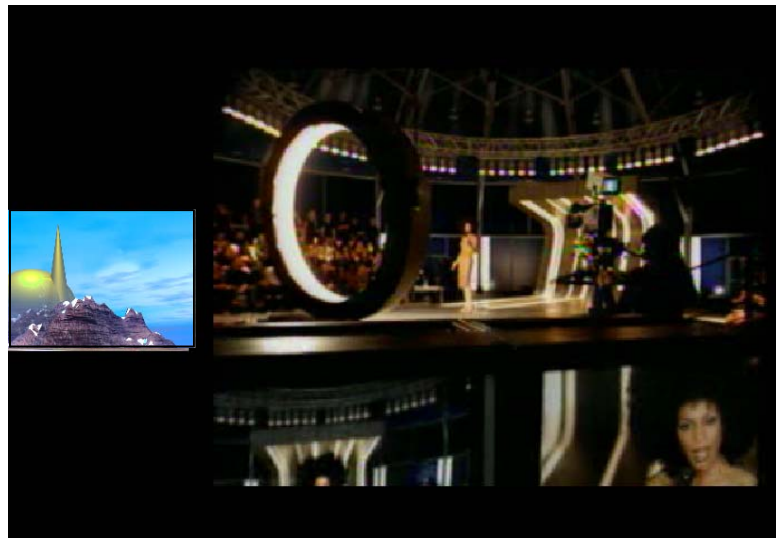
### **Rotate Camera Colors**

This feature is similar to the Psycho effect, except that the colors of the effect will rotate and change.



### **Animate Camera and Video**

In this mode, you can play a music video or karaoke song while animating camera window within the same screen as in the music video. The camera display will encircle the video display, slowly becoming larger, while the video display slowly becomes smaller, then the camera display will begin to shrink, as the video display begins to enlarge.



This is a great effect to get the audience involved during video playback.