

REMOTE CONTROL

These instructions will thoroughly explain how to set up the remote control and how to operate it. Before going to the step-by-step directions, let's go over the **hardware**. The remote control sends a radio frequency (RF) to the receiver. The receiver then sends the message by wire to your computer.

SETTING UP YOUR REMOTE CONTROL (For hardware definitions, please see above)

- 1) Turn on your computer.
- 2) Plug the DJPower RF receiver into the serial port of your computer using the given computer cable (This is the port usually used by the serial mouse). If you wish to use a mouse in addition to the remote, use a PS2 mouse or the other port for the remote.
 - a. Turn the receiver on.
- 3) Open DJPower
 - a. Open the Options Menu
 - b. Choose the Misc tab (or Advance 2)
 - c. Click on the "Change Keyboard & Remote Control Settings" button.
 - i. Under Remote Settings, click on the "RF Remote"
 1. This will give you a prompt that the com port has been found.
 2. Click on OK
 - ii. Close all the windows to back to the main DJPower screen by clicking on the OK buttons.
- 4) For best results, place the RF receiver at least two feet away from the monitor. Under the table is a good place.
- 5) Now you are ready to use the remote control with DJPower & your computer.

IMPORTANT:

NEVER put any objects on the top of the remote. This will activate the buttons and drain the batteries.

The remote control device needs one 9V battery. It is suggested that you always have a couple of batteries on hand for back up.

ALWAYS keep your remote in a hard case container so that surrounding objects don't come in contact with it.

NOTICE for users with W2000:

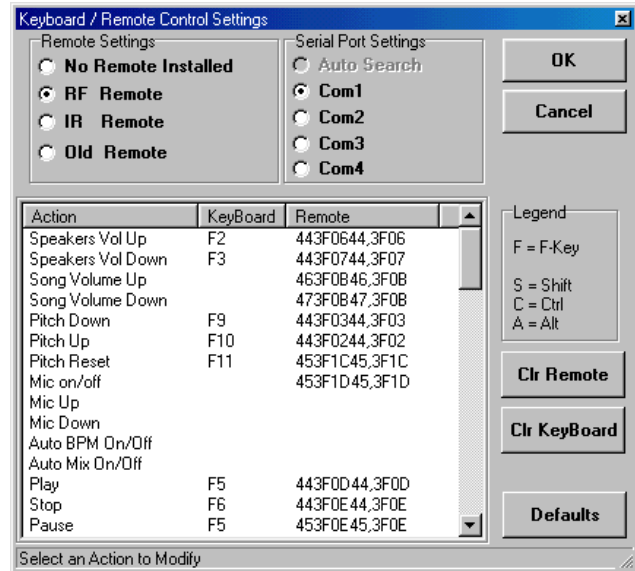
- 1) Turn your computer on.
- 2) Connect the receiver to the serial port.
- 3) Turn on DJPower

*****If you have the receiver connected before you start your computer or after you start DJPower, the remote will not work.**

PROGRAMMING YOUR REMOTE CONTROL

You can assign any function to any button on your remote. This is done in the Options menu that is accessed through the main screen of DJPower.

- 1) On the Misc tab, click on “Change Keyboard & Remote Control Settings”.
- 2) Under Remote Settings, click on “RF Remote so that it has the black dot in the circle.
- 3) Under Serial Port Settings, click on the correct Com setting and a confirmation will appear.



To Enter in New Command

- 1) Click on the command that you wish to program.
- 2) Press the button on the remote that you wish to control that command. – You will see a code appear in the remote column.
- 3) Click on OK.

To Change an Existing Command

- 1) Click on the command that you wish to change.
- 2) Click on “Clr Remote”
- 3) Once more, click on the command that you wish to change.
 - a. Note: This could put you in an editing mode. If it does, click next to the word(s)
- 4) Press the button on the remote that you wish to control that command. – You will see a code appear in the remote column.
- 5) Click on OK.

TROUBLE SHOOTING

Q. My remote is not responding.

- A.**
- 1) Make sure the receiver is plugged in properly to the correct port.
 - 2) Make sure the correct settings are made in DJPower. See step 4 in the remote installations directions.
 - 3) Your remote batteries may be low. If so, replace them.
 - 4) Was the receiver plugged in before you turned on the computer? You need to plug it in **AFTER** you turn on the computer and **BEFORE** you turn on DJPower.
 - 5) Your remote may need to be activated. To do so, push on the PC button (under the Power button) and hold it down for two second.
 - 6) The RF receiver may be turned off. If so, turn it on.
 - 7) You may need to move the location of your RF receiver.
 - 8) Make sure that that your com ports are working properly.
 - a. Open the Control Panel
 - b. Double click on Systems
 - c. Double click on Ports (COM & LPT)
 - d. Double click on the port that you have plugged the receiver into.
 - e. On the General tab, the Device status should read "This device is working properly." If you do not get this message, then either use another port or consult your computer manufacturer.